

Vilter Microprocessor Control

VISSION 20/20

- **Reliable Operation**
- **Enhanced Communications**
- **Easy to Use**
- **Flexible and Expandable**



Vilter Microprocessor Control

VISSION 20/20

Features

Reliable Operation

- Linux operating system for streamlined, robust operation
- Low thermal foot print enables high ambient operating temperature
- Advanced ETX CPU technology has fewer connections which improves speed and reliability
- Advanced noise isolation technology reduces EMF interference
- Built-in diagnostic functions simplify troubleshooting

Easy to Use

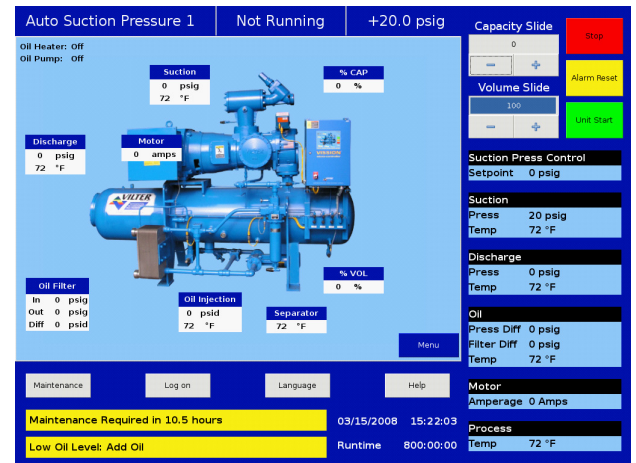
- High visibility large 15" XGA color touch screen display
- Automatic touch screen calibration
- Real-time and historical trending
- Four levels of security
- Multi-language capability
- USB flash memory for updating software and downloading reports and setpoints

Enhanced Communication

- Web accessibility provides full control and monitoring from a remote PC as though you were standing in front of the compressor
- High-Speed Ethernet IP and Modbus TCP protocols

Flexible and Expandable

- Configurable software for maximum application flexibility
- Backward compatible with Vilter Vission and keypad micro-controllers
- Expandable I/O adapts to future expansion requirement
- Multiple compressor sequencing
- Condenser control



EmersonClimate.com

YYYY[Year]XXX[Division]-XX [Unique #] (XX/XX)[Issue Date] Emerson and [other referenced Emerson/subsidiary marks, in alphabetical order] are trademarks of Emerson Electric Co. or one of its affiliated companies. ©[year] [copyright owner – e.g., Emerson Electric Co. or Emerson Climate Technologies, Inc.] All rights reserved. Printed in [Country]

EMERSON. CONSIDER IT SOLVED.™